

Millhouse Primary School

Newsletter

www.millhouseprimary.co.uk

A Small School with a Big Heart



Message from Mrs. Gray:

The School Council held their first meeting – socially distanced on the playground – last week. They had lots of ideas for further promoting reading; improving playtimes; fundraising. They have requested that on Friday 24th October, there is a non-school uniform day with a Halloween fancy dress theme in return for a £1 donation to FOMS. The FOMS group have agreed to buy prizes for the best costume in each class. We are sure that this will be popular across the school. Children will need to play out in their costumes so please consider this when deciding what to wear!



Class 2 News

Mrs. Hattersley will begin her maternity leave at October half term. I know she is going to miss the children but I'm sure she'll be kept very busy! Miss. Baldwin will be teaching Class 2 on our return to school on 3rd November. Miss Baldwin has worked extensively across school and is already well known to the children. She is looking forward to taking up the role.

Attendance

Well done to Class 5 for the highest attendance of the week with 100%!
Fabulous!

Class 1 – 93.9%
Class 2 – 99.2%
Class 3 – 94.9%
Class 4 – 97.1%
Class 5 – 100%



Remember every day counts!

Special Mentions

Last week's Special Mentions were awarded to:

Class 1 – Vinnie and Ellie

Class 2 – Alex and Lily

Class 3 – Ethan and Holly F.

Class 4 – Iris and Oliver J.

Class 5 – Callum P. and Rosie

Fantastic effort!



Tough Tortoises

We present Tough Tortoise certificates for being determined; persevering even when we find things hard; ignoring distractions.

In Friday's assembly, we awarded certificates to:

Maddie (Class 1);

Caleb (Class 2);

Hope (Class 3);

Charlie (Class 4);

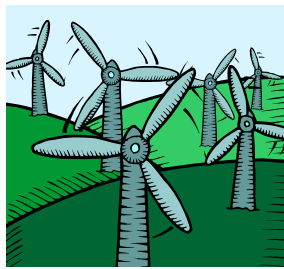
Lilly (Class 5).



Availability of IT for remote learning survey

Thank-you to those of you who have responded to our remote learning survey. It is still open (we will close it at the end of Wednesday) and can be accessed by clicking on the link below. Please note the survey is organised and managed on behalf of the school by a 3rd party; by completing it you understand and accept this.

[IT Survey](#)



Millhouse Primary School

Newsletter

www.millhouseprimary.co.uk



A Small School with a Big Heart

Parents' Evening

You should have received a letter at the end of last week detailing our arrangements for parents' evenings. Appointments will be conducted via telephone calls this year. Please contact the school office by email or telephone to make an appointment.

Dates:

Tuesday 20th October and Wednesday 21st October (4:00 – 6:00pm) – Classes 1, 2, 4 and 5.

Wednesday 21st October and Thursday 22nd October – Class 3.

First Class photograph

The Barnsley Chronicle photographer visited school last Thursday and took a lovely photograph of our new Reception pupils. The photograph will be published in the First Class supplement of the Chronicle in the next couple of weeks (we do not have a precise date) and is available to purchase via the Barnsley Chronicle website:

<https://photosales.barnsleychronicle.com/>

Year 5 Bikeability

Every year, Year 5 pupils take part in Bikeability – an initiative aimed to ensure children are able to ride their bikes safely on the road. Due to the current situation, this year two separate weeks have been allocated, ensuring that classes do not need to be mixed. Y5 pupils in Class 4 will undertake the project w/c 3rd November (straight after the holidays) and Y5 children in Class 5 will participate w/c 23/11/20. Children need to be able to ride a bike without stabilisers in order to take part. A separate letter will be sent with further details.

Reminder: Individual school photographs

The school photography company, Tempest, is visiting school on **Wednesday 14th October** to take individual photographs. Covid-19 secure arrangements will be put in place – photographs will take place in the hall; each class will be allocated a separate session; staff will disinfect the area between each class. This year we will be unable to invite younger siblings into school for family groups and will not be able to offer group photographs for siblings in school. Please do not hesitate to get in touch if you require further information or if you do not wish your child to have their photograph taken. There is no obligation to purchase any photographs taken.

Reminder: Year 6 parents: PGS Open Evening

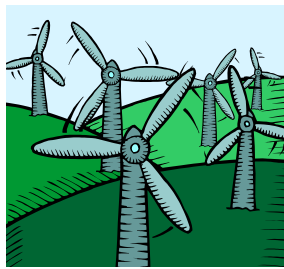
We have been asked to inform Y6 parents of Penistone Grammar School's virtual open evening, which is taking place on Thursday 15 October 18:00 - 20:00.

Parents will be able to join live online via social media and at www.penistone-gs.uk.

For further information please contact PGS on 01226 762114; email enquiries@penistone-gs.uk or follow PGS on Twitter @PGSALC #PGSOpenEvening2020 #PGSClassof2026.

October half-term

We break up for October half-term on Friday 23rd October. There is an INSET day on Monday 2nd November. School re-opens to pupils on Tuesday 3rd November.



Millhouse Primary School

Newsletter

www.millhouseprimary.co.uk

A Small School with a Big Heart



Covid-19: Important reminders

We all have a role to play in keeping our school and community safe. Contact school by telephone or email (k.gray@millhouseprimary.co.uk) if you are unsure about whether to send your child to school and need advice.

Do not send your child to school if:

- they have symptoms of Coronavirus (a high temperature; a new, continuous cough - this means coughing a lot for more than an hour, or 3 or more coughing episodes in 24 hours (if you usually have a cough, it may be worse than usual); a loss or change to your sense of smell or taste) or have tested positive
- you, someone in your household or support bubble has symptoms or has tested positive.

You should book a free Coronavirus (COVID-19) test and self-isolate in line with the guidance below and at www.nhs.uk/coronavirus.

When should you self-isolate?

Self-isolate immediately for at least 10 days if:

- you have any symptoms of coronavirus
- you've tested positive for coronavirus – this means you have coronavirus.

Self-isolate immediately for at least 14 days if:

- someone you live with has symptoms or tested positive
- someone in your support bubble has symptoms or tested positive
- you've been told by NHS Test and Trace that you've been in contact with someone who has coronavirus.

The 14-day period starts from the day when the first person in the house became ill.

You must not leave your home if you're self-isolating.

For more information visit www.nhs.uk/coronavirus

Please inform school immediately if your child or someone in your household/ support bubble has symptoms of coronavirus or has tested positive. If this is out of school hours, email k.gray@millhouseprimary.co.uk.

Access Policy:

Thank-you for your co-operation when we had to change the arrival arrangements for Class 2 and Class 5 last week due to the flooding situation. We recognise that for some families the drop off was actually made easier by this change and are currently reviewing the access policy for Class 2 particularly. We will update parents shortly.

Dropping off and collecting children from school

Please can we ask that parents do not arrive before the allocated arrival/ departure windows for their children if possible (we understand that this might happen if you have more than one child to collect). By allocating 10 minute windows for each class, we are aiming to minimise the number of people having to wait in order to support social distancing. In addition, we request that parents enter the school site and stand in the collection area if collecting pupils from Class 3 or 4 and do not wait on the pavement at the front of school – this needs to be kept clear to allow people to leave the school site safely. Many thanks for your co-operation.

Remote Learning

If your child is off school because they have to self-isolate due to COVID-19 (either because they or a member of their household has symptoms/ positive result), staff will provide home learning via Purple Mash. This will mirror as closely as possible the work that the children are covering in class. Please be aware that staff are teaching and therefore it will generally not be possible to provide home learning on the first day of absence but staff will endeavour to issue it as soon as possible once notified.

We will also use Purple Mash to communicate with pupils and set home learning in the event of a wider school closure, for example if we are advised by PHE to close a class due to a positive case of Covid-19 within school.