

Millhouse Primary School

Newsletter

www.millhouseprimary.co.uk

A Small School with a Big Heart



Message from Mrs. Gray:

We had a fantastic final day before half term. The children looked amazing in their spooky costumes! I hope you all had a wonderful holiday and managed to enjoy some lovely family time despite the restrictions in place. The government announcement on Saturday made it clear that schools will remain open. We are looking forward to the second half of the autumn term. We will publish our plans for Christmas over the next couple of weeks. We are determined to make it a special time for the children, whilst ensuring we follow the guidelines in place. Please read the Covid-19 reminder section of the newsletter each week and follow the most up to date government advice – we all have a role in keeping our school and community safe.

Seesaw

This year for class work, homework activities and as part of our remote learning offer we are exploring the use of Seesaw (<http://seesaw.me>), a secure online journal.

Teachers are able to share work, including video instructions, via this platform. Class 4 began trialling Seesaw before the holidays. We would like to be able to use the platform across school but due to GDPR regulations need parental consent. Thank-you to parents who have already returned consent via email, the paper form or by replying to the text message received. **If you haven't yet responded, please can we ask you to do so as soon as possible. This platform will be particularly useful for remote learning.**

Tough Tortoises

We present Tough Tortoise certificates for being determined; persevering even when we find things hard; ignoring distractions.

In Friday's assembly, we awarded certificates to:

- Turner (Class 1);
- Harry D (Class 2);
- Joshua C (Class 3);
- Reegan (Class 4);
- Lucas (Class 5).



Attendance

Well done to Class 5 for the highest attendance of the final week of the first half-term.

Fabulous!

Class 1 – 94.9%

Class 2 – 98.3%

Class 3 – 97.4%

Class 4 – 98.8%

Class 5 – 99.1%



Remember every day, counts!

Special Mentions

The Special Mentions for the week before half-term were awarded to:

Class 1 – Lyra-Jayne and Caiden

Class 2 – Mia and Austin

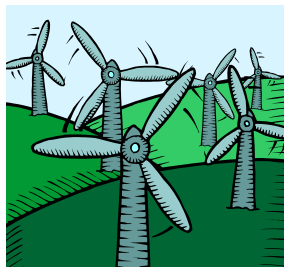
Class 3 – Abbie and Bobby

Class 4 – Ruby and Ruaridh

Class 5 – Bronagh and Lillian

Fantastic effort!





Millhouse Primary School

Newsletter

www.millhouseprimary.co.uk

A Small School with a Big Heart



Parents' Consultations

Thank-you to parents who made appointments to speak to staff before the holidays. If the parent consultation dates were not convenient and you were unable to speak to your child's teacher, please contact the school office and they will endeavour to arrange a suitable time at the start of this half-term.

Teachers will be contacting parents of children on the SEN register over the next couple of weeks to arrange appointments to discuss the provision in place to meet their needs.

Individual Photographs

Please return order forms to school by Wednesday 4th November. Any orders after this date will need to be placed directly with the company and will incur a delivery charge.

FOMS Christmas Card project

To raise funds to enhance our children's time in school, The Friends of Millhouse School group (FOMS) have organised a Christmas card project in conjunction with the company Cauliflower Cards. Children have produced a Christmas themed piece of artwork in school which can be turned into a Christmas card or other Christmas themed items (gift labels/ wrapping paper/mug). This week, we will send home order forms with your children's artwork included (Class 5 sent their forms out before half-term). If you wish to place an order this needs to be completed online, following the details on the order form. The form with the artwork then needs to be returned to school by **Monday 9th November**. Do not send money into school – orders must be placed online. For school to receive commission, orders must be placed by the deadline (9th November) and forms returned to school.

First Class photograph

It is still possible to purchase the group photograph of our Reception children, taken for the Barnsley Chronicle First Class supplement. A copy of this is displayed in the office window alongside the main entrance. If you wish to purchase the photograph, please send £5.00 cash in a named envelope to the school office.

Year 5 Bikeability

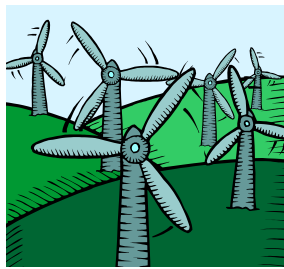
This week Year 5 pupils in Class 4 will take part in Bikeability. Please ensure bikes and helmets are brought to school each day. Please contact school if it is a problem to take your child's bike home at the end of each day so that suitable arrangements can be made. Year 5 pupils in Class 5 will participate in Bikeability w/c 23.11.20.



Blue Bird – Chasing Happiness Virtual Project

Class 4 are taking part in an exciting project with Tell Tale Hearts Theatre Company. They participated in a virtual workshop before the holiday, in which they designed lands and produced some creative writing linked to some drama.

The children's ideas are to be used by the company to create a production which will be performed to them at a later date. How exciting!



Millhouse Primary School

Newsletter

www.millhouseprimary.co.uk

A Small School with a Big Heart



Covid-19: Important reminders – We ask that you read these carefully.

We all have a role to play in keeping our school and community safe. Contact school by telephone or email (k.gray@millhouseprimary.co.uk) if you are unsure about whether to send your child to school and need advice.

Do not send your child to school if:

- they have symptoms of Coronavirus (a high temperature; a new, continuous cough - this means coughing a lot for more than an hour, or 3 or more coughing episodes in 24 hours (if you usually have a cough, it may be worse than usual); a loss or change to your sense of smell or taste) or have tested positive
- you, someone in your household or support bubble has symptoms or has tested positive.

You should book a free Coronavirus (COVID-19) test and self-isolate in line with the guidance below and at www.nhs.uk/coronavirus.

When should you self-isolate?

Self-isolate immediately for at least 10 days if:

- you have any symptoms of coronavirus
- you've tested positive for coronavirus – this means you have coronavirus.

Self-isolate immediately for at least 14 days if:

- someone you live with has symptoms or tested positive
- someone in your support bubble has symptoms or tested positive
- you've been told by NHS Test and Trace that you've been in contact with someone who has coronavirus.

The 14-day period starts from the day when the first person in the house became ill.

You must not leave your home if you're self-isolating.

For more information visit www.nhs.uk/coronavirus

Please inform school immediately if your child or someone in your household/ support bubble has symptoms of coronavirus or has tested positive. If this is out of school hours, email k.gray@millhouseprimary.co.uk.

Access Policy:

We have now updated our Access Policy to reflect the change in arrangements for Class 2. A copy of the new policy is attached to today's email.

Dropping off and collecting children from school

Please can we ask that parents do not arrive before the allocated arrival/ departure windows for their children if possible (we understand that this might happen if you have more than one child to collect). By allocating 10 minute windows for each class, we are aiming to minimise the number of people having to wait in order to support social distancing. In addition, we request that parents enter the school site and stand in the collection area if collecting pupils from Class 3 or 4 and do not wait on the pavement at the front of school – this needs to be kept clear to allow people to leave the school site safely. Many thanks for your co-operation.

Face Coverings

We are asking all parents/ carers who are able to, to wear face coverings when on the school site in line with the policy of the Barnsley Alliance Board. We appreciate your co-operation with this.

Remote Learning

If your child is off school because they have to self-isolate due to COVID-19 (either because they or a member of their household has symptoms/ positive result), staff will provide home learning via Purple Mash. This will mirror as closely as possible the work that the children are covering in class. We will also use Purple Mash to communicate with pupils and set home learning in the event of a wider school closure, for example if we are advised by PHE to close a class due to a positive case of Covid-19 within school.