

Millhouse Primary School

Newsletter

www.millhouseprimary.co.uk

A Small School with a Big Heart



Message from Mrs. Gray:

Welcome back! I hope that you all had a wonderful summer. We are looking forward to a busy term packed full of exciting learning. We would like to extend a special welcome to our new starters in Class 1. We are sure they will quickly feel part of the Millhouse family.

Arrival at school:

The start of the school day is 9:00am however children are encouraged to arrive at 8:45am, when teachers open the doors, in order to complete early bird work which consolidates previous learning and helps to ensure a calm start to the day.

Reminders:

P.E.

Please remember that PE kits should be brought to school on Monday and taken home on Friday each week.

Jewellery

No jewellery is allowed except small stud earrings which must be removed for PE.

Dinner Money

Dinner Money is £12.00 per week (£2.40 per day) and should be paid on Monday. Payment can be made online via school money. If you need any help to log on to the online system please speak to Mrs. Taylor or Mrs. Sullivan in the school office. We do not accept cash/cheque payments. If you wish to pay in person you can do so by bringing a debit/credit card to the school office.

Please may I remind you that unless you are in receipt of free school meals, dinner money is required for KS2 pupils (Year 3-6 children) and meals should be paid for in advance.

A copy of the new menus has been sent out with today's newsletter.



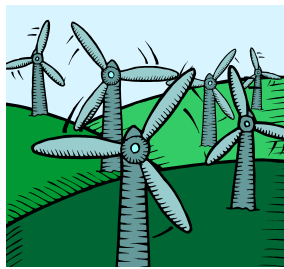
Attendance:

Target: 97%

Research shows there is evidence of a strong link between good attendance and increased attainment. Pupils who regularly attend school make much better progress both socially and academically. We have a revised attendance policy based on new guidance from the DFE – this is published on the school website. Please note that this clearly states that holidays can only be authorised in exceptional circumstances. Any requests for a leave of absence must be made at least four weeks in advance using the application form available on the website or from the school office. Five or more consecutive days of unauthorised leave of absence (holiday) may result in a fixed penalty fine. In order to encourage high attendance, we present 100% certificates each term. Also, each week the class with the highest attendance receives our attendance mascot – **SAM** – and receives 5 minutes extra playtime.



Remember every school day counts!



Millhouse Primary School

Newsletter

www.millhouseprimary.co.uk

A Small School with a Big Heart



After-school clubs

Our after-school club programme begins next week:

Monday – Cartoon Club

Tuesday – Team Activ sports club Y1-3

Wednesday – Team Activ sports club Y4 – Y6

Thursday – Choir Club

Club letters will be sent out this week with further details of the autumn term's programme. Places are available on a first come, first served basis, so please return the reply slips quickly to avoid disappointment.

Dates for the diary

8.9.22 Toddler group in school – 9-10am

23.9.22 Jeans for Genes Day

w/c 17.10.22 Bikeability Y5

w/c 24.10.22 Half –term holiday

31.10.22 INSET Day

17.11.22 Year 6 Crucial Crew Visit

18.11.22 Children in Need

28.11.22-30.11.22 Y6 visit to Robinwood

More dates to follow.

Keep checking the weekly newsletter!



Uniform

Please can you ensure all school uniform items, including PE kits are labelled clearly with your child's name so that we can return any lost items to pupils. We want to try to avoid an overflowing Lost Property box this year!

Consent Update

Each year we are required to update our consent information for media use and other aspects of school life. We would be grateful if the consent forms sent home with the children today are completed promptly and returned to school.

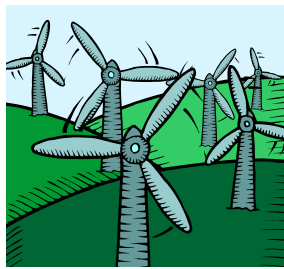
Penistone4Sports

We are a member of the group Penistone4Sports, along with other local schools. This provides opportunities for children to take part in sporting competitions across a range of sports. The first of these is Y5/6 girls' football which will be held at PGS after school on Thursday 15th September. Details will be sent out this week to the pupils interested in taking part.



Seesaw

We are continuing to use Seesaw, a secure online journal, this year for homework, classwork and any remote learning needed. Due to data protection laws, we need consent to use this for children who are new to the school. A letter has been sent today to our new starters with further details. Please return the consent slip as soon as possible.



Millhouse Primary School

Newsletter

www.millhouseprimary.co.uk

A Small School with a Big Heart



Did you know that you may be able to help increase our school budget?

The Government gives money to schools to help children from lower income families to do their very best. This funding is called 'Pupil Premium'. If your child is in Key Stage 2, this will also enable them to enjoy free school dinners. (All children in Reception and Key Stage 1 already get free school meals). The Pupil Premium grant is provided for each eligible child, and can be up to £1,385 additional funding to support your child's education and fund valuable support and resources in school.

Even if you don't want your child to receive a free school meal, we'd ask you to complete the application form so that as a school we receive as much funding as possible. No one will know you have registered and it will not affect any other benefits that you are claiming.

You can register your child for Free School Meals if you get any of these benefits:

- income support
- income based job seekers allowance
- income related employment and support allowance
- guarantee element of state pension credit
- child tax credit with no working tax credit and have an income as assessed by the Inland Revenue that does not exceed £16,190 (subject to change annually)
- support under Part 1V of the Immigration and Asylum Act 1999
- Universal Credit - if you apply on or after 1 April 2018 your household income must be less than £7,400 a year (after tax and not including any benefits you receive)

If you don't want your child to have the school meals they can continue as normal – as long as you qualify and are registered, the school still gets extra funding.

Universal infant free school meals

All infant age pupils (Reception/Years 1 and 2) are entitled to receive a free school meal. Although infant children will automatically receive a free school meal, this isn't linked to pupil premium funding therefore we're asking families who have a statutory entitlement to free school meals to complete an application form online so that it can be checked if the school is entitled to receive Pupil Premium for your child.

To make a claim please apply on line at <https://www.barnsley.gov.uk/services/children-families-and-education/schools-and-learning/free-school-meals/>

Alternatively you can call the customer contact - 01226 787787.