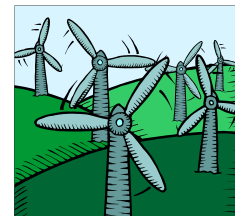


Millhouse Primary School
2023 Performance tables



EYFS

School Percentage of Children Achieving a Good Level of Development: 69%

National Percentage of Children Achieving a Good Level of Development: 67%

Y1 Phonics Screening

School Percentage of Children Passing Phonics Screening Check: 100%

National Percentage of Children Passing Phonics Screening Check: 79%

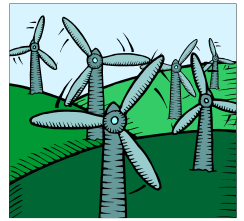
Key Stage 1 results

| 20 pupils in cohort (1 pupil = 5%) | Reading, Writing and maths combined | Reading | Writing | Maths |
|---|--|---------|---------|-------|
| School percentage meeting age related expectation | 60% | 75% | 70% | 75% |
| National percentage meeting age related expectation | 56% | 68% | 60% | 70% |
| School percentage achieving greater depth | 5% | 25% | 15% | 15% |
| National percentage achieving greater depth | 6% | 19% | 8% | 16% |

Key Stage 2 results

| Key Stage 2 21 pupils in cohort | Reading, Writing and maths combined | Reading | Writing | Maths |
|---|--|---------|---------|-------|
| School percentage meeting age related expectation | 71% | 90% | 76% | 81% |
| National percentage meeting age related expectation | 59% | 73% | 71% | 73% |
| School percentage achieving a high score | 19% | 38% | 19% | 29% |
| National percentage achieving a high score | 8% | 29% | 13% | 24% |
| School average scaled scores | - | 105 | - | 106 |
| National average scaled scores | - | 105 | - | 104 |
| School KS1 to KS2 progress score | - | +0.6 | +0.6 | +2.1 |
| National KS1 to KS2 progress score | - | +0.04 | +0.04 | +0.04 |

Millhouse Primary School
2023 Performance tables



Y4 multiplication check

| <u>2023 (20 pupils)</u> | School | National |
|--------------------------------|------------------------|-----------------|
| Score 21-25 | 70% (35% - full marks) | 60.9% |
| Score 16-20 | 15% | 17.3% |
| Score 16+ | 85% | 78.2% |
| Average Score | 21.0 | 20.3 |